

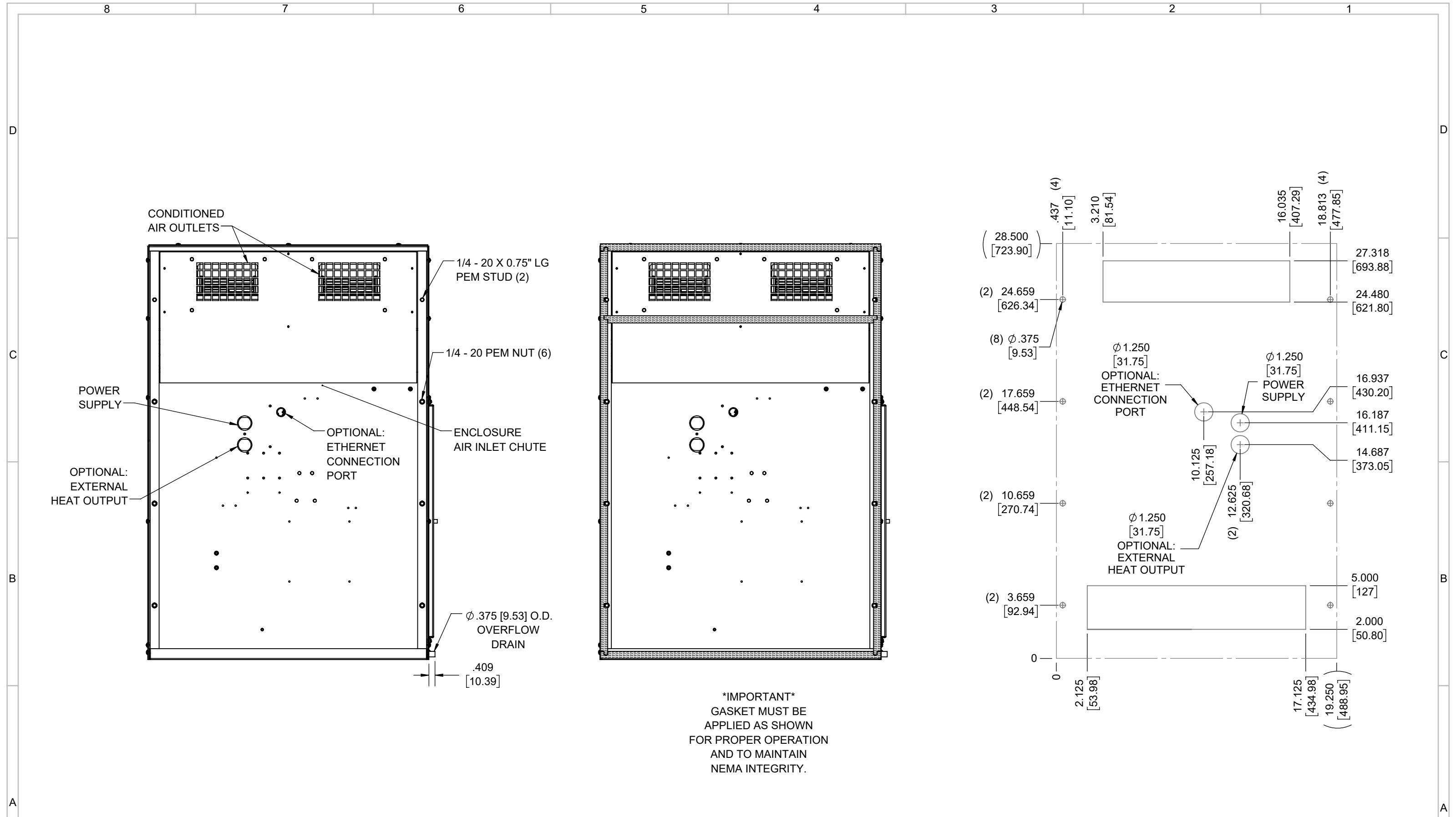
IQ6000V  
 COOLING CAPACITY: 6000 BTUH (1760W) @131°F (55°C)  
 MAXIMUM AMPS: 10.9 (1308W) @120V/60HZ  
 MAXIMUM AMPS: 4.8/5.3 (1104/1166W) @230/220V 60/50HZ  
 MAXIMUM OPERATING TEMP: 131°F (55°C)  
 MINIMUM OPERATING TEMP: -40°F (-40°C)  
 DIMENSIONS: 28.50" (724MM) H X 19.31" (490MM) W X 8.47" (215MM) D  
 WEIGHT: 87 LBS (39.5KG)

REV	CHG	DATE	APP	DATE	CN #
C		3/29/2018	RCC		1351
B		1/4/2018	RCC		
A		4/14/2017	RCC		

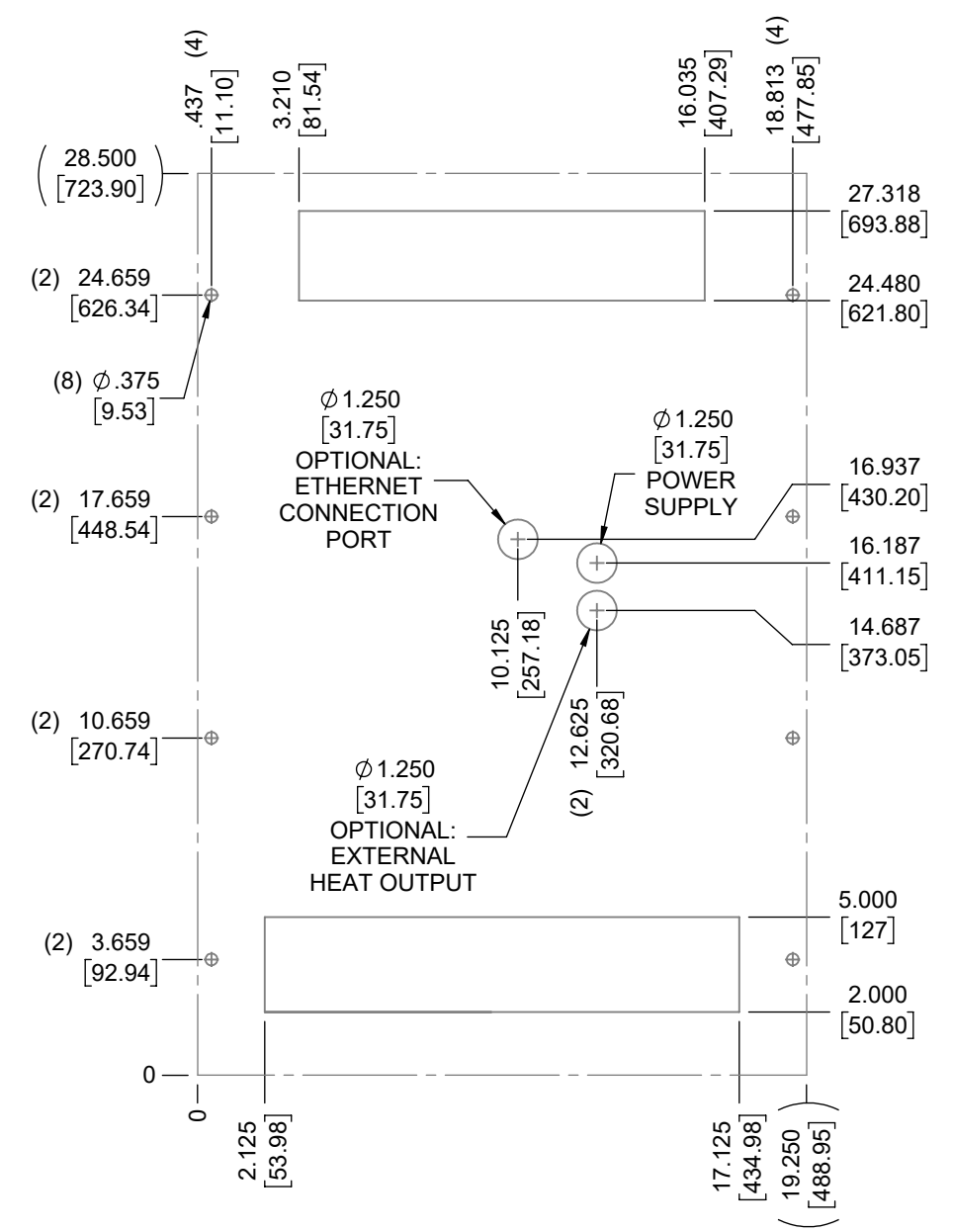
ITEM NUMBER	N/A	USED ON	IQ6000V
MATERIAL	N/A		
EST WT:	lbs		
DRAWN BY	RCC	DATE	4/14/2017
		SCALE	1:8

UNLESS OTHERWISE SPECIFIED TOLERANCES  
 .X ±.060  
 .XX ±.030  
 .XXX ±.015  
 FRACTIONAL ±1/16  
 ANGULAR ±1/2°  
 SURFACE FINISH 63  
 DO NOT SCALE DRAWING DIMENSIONS ARE INCHES

**ICE QUBE, INC.**  
THIS IS A PROPRIETARY DOCUMENT. DO NOT REPRODUCE OR DISCLOSE WITHOUT THE EXPRESS WRITTEN PERMISSION OF ICE QUBE, INC.  
 DESCRIPTION  
**IQ6000V SPEC DRAWING**  
 DRAWING NUMBER  
**IQ310228**  
 REV  
**C**



EVAP. OUTLET  $\approx$  236 CFM  
 COND. OUTLET  $\approx$  410 CFM  
 SOUND LEVEL @5FT FROM UNIT @ A HT. OF 3FT = 62 dBA  
 SOUND LEVEL @2FT FROM UNIT @ A HT. OF 5FT = 63 dBA  
 CONDENSER INLET MIN. CLEARANCE 2.57"



ITEM NUMBER N/A	USED ON IQ6000V	UNLESS OTHERWISE SPECIFIED TOLERANCES X $\pm$ .060 .XX $\pm$ .030 .XXX $\pm$ .015 FRACTIONAL $\pm$ 1/4 ANGULAR $\pm$ 1/2°	<p>ICE QUBE, INC. THIS IS A PROPRIETARY DOCUMENT. DO NOT REPRODUCE OR DISCLOSE WITHOUT THE EXPRESS WRITTEN PERMISSION OF ICE QUBE, INC.</p>
MATERIAL N/A			
EST WT: lbs	DATE 4/14/2017	SCALE 1:6	DESCRIPTION IQ6000V SPEC DRAWING
DRAWN BY RCC			DRAWING NUMBER IQ310228
			REV C